

# A continuing story



- 1884 Creation of SNES
- 1905 First French law on seed trade
- 1932 Creation of the French official Catalogue of species and varieties
- 1942 Creation of CTPS
- 1961 Signature of Convention of Paris and creation of UPOV
- 1971 Creation of GEVES as department of INRA
- 1987 Installation of GEVES first station in Anjou (Brion)
- 1989 GEVES becomes Public Interest Group
- 1993 SNES relocates to Beaucouzé (49)
- 2009 Relocation\* of GEVES head office and experimental unit from Versailles (78) to Anjou (Beaucouzé & Anjouère)
- 2012 CPOV becomes INOV (National Office for plant breeders rights) and relocates to GEVES head office at Beaucouzé

\* With contribution of :



© GEVES - January 2017 - All rights reserved

### Glossary

CTPS	Technical Committee for Plant Breeding
CPOV	Plant Breeders Rights Committee
INOV	National Office for plant breeders rights
OCVV	Community Plant Variety Office
UPOV	International Union for the protection of new varieties of plants
SOC	Official Service for Seed and Variety control and certification
ISTA	International Seed Testing Association



*GEVES teams are at your disposal, for all requests or information, you can contact us*

**GEVES - Groupe d'Étude et de contrôle des Variétés Et des Semences**  
 25 rue Georges Morel - CS 90024 - 49 071 BEAUCOUZE cedex - FRANCE

**02 41 22 58 00 - [contact@geves.fr](mailto:contact@geves.fr) - [www.geves.fr](http://www.geves.fr)**



## Variety and Seed Study and control Group

GEVES is a Public Interest Group associated with :



INRA - National Institute for Agricultural Research



Ministry of agriculture, agri-food and forestry



GNIS - French Association for seeds and seedlings



*An expertise from gene to plant through seed*



**www.geves.fr**

# GEVES' missions

## Evaluation of all new plant varieties

- for their registration on the official French catalogue, granted by the ministry in charge of Agriculture upon CTPS proposal (Technical Committee for Plant Breeding), and authorising their marketing

- for their legal protection given at a national level by INOV (National Office for plant breeders rights) or at Community level by CPVO (Community Plant Variety Office), according to UPOV international convention (International Union for the Protection of New Varieties of Plants)

- **Control of quality and varietal conformity of seeds and plants** within the framework of certification by SOC (Official Service for Seed and Variety control and certification) for marketing, according to the international rules of ISTA (International Seed Testing Association)

- **Training courses** including for laboratories certification, delivered by SOC

- **Monitoring of a French network** of laboratories for seed analyses

- **Research and expertise** to improve methods and techniques at national and international levels

- **Manage national coordination of the preservation** of the phyto-genetic resources

# GEVES and quality

GEVES is certified ISO 9001 : V2008 for VCUS and BioGEVES missions

SNES is accredited by ISTA and COFRAC (French Committee for Accreditation) according to the standard ISO 17025, and is appointed by the Ministries in charge of Research, Agriculture, and Economy

BioGEVES is accredited by COFRAC for the detection of GMOs and is appointed by the Ministry in charge of Agriculture



# Our locations



- Head Office
- SNES : National Seed Testing Station
- SEV : Variety testing department autonomous experimental units
- SEV experimental units in association with INRA
- BioGEVES Laboratory



# Organised into 3 operating divisions

## SEV - Variety Study Department

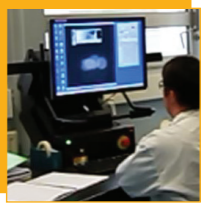
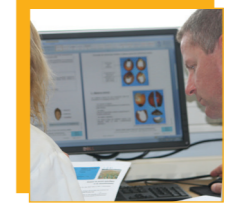
- Field and greenhouse tests, for registration and protection, following experimental protocols for each species
- A new variety must be **Distinct, Uniform and Stable (DUS)**. Agricultural crops are additionally checked for **Value for Cultivation, Use and Sustainability (VCUS)**
- Activities of SEV are conducted on **12 locations** and on field crops, vegetables, ornamentals, fruit trees and vine. Numerous trials for VCUS are run by breeders and other structures under GEVES supervision and control.



## SNES - National Seed Testing Station

SNES, french official reference laboratory, manage:

- Analyses and controls of seed quality (certification, import-export, on-demand expertise)
- Sanitary quality analyses on seeds and resistance tests on plant varieties
- Monitoring and technical support for seed companies (**110 laboratories**)
- Training and technical qualification for laboratory engineers and technicians

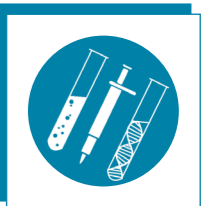
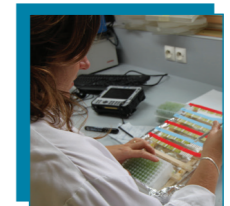


## BioGEVES - Laboratory of Molecular Biology and Biochemistry

BioGEVES develops new methods and conducts analyses mainly in support of SEV and SNES by:

- Genotyping by protein electrophoresis and molecular markers
- Detection of specific DNA sequences (GMOs, pathogens)
- Biochemical analyses

BioGEVES also performs on-demand



Groupe d'Étude et de contrôle des Variétés Et des Semences

## Le GEVES in figures

- **2500** candidate varieties studied per year
- **50 000 lots** seed lots analysed per year
- **420 ha** on **12** locations
- **260** permanent employees including **160** from INRA