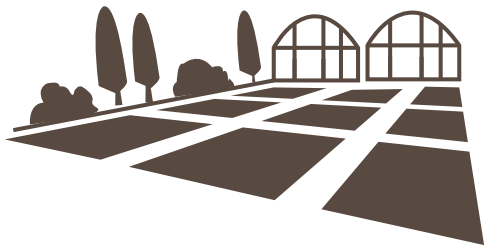


An expertise from
 gene to plant through
 seed
 supporting
 public policies
 and the private
 sector
 on all cultivated species



- ➔ 1884 Creation of SNES
- ➔ 1905 First French law on seed trade
- ➔ 1932 Creation of the French official Catalogue of species and varieties
- ➔ 1942 Creation of CTPS
- ➔ 1961 Signature of Convention of Paris and creation of UPOV
- ➔ 1971 Creation of GEVES as department of INRA
- ➔ 1987 Installation of GEVES first station in Anjou (Brion)
- ➔ 1989 GEVES becomes Public Interest Group
- ➔ 1993 SNES relocates to Beaucouzé (49)
- ➔ 2009 Relocation* of GEVES head office and experimental unit from Versailles (78) to Anjou (Beaucouzé & Anjouère)
- ➔ 2012 CPOV becomes INOV (National Office for plant breeders rights) and relocates to GEVES head office at Beaucouzé
- ➔ 2016 National Coordination Structure of cultivated Plant Genetic Resources set up in 2016 by the French Ministry of Agriculture and Food

* Avec le concours de :

GEVES teams are at your disposal,
 for all requests or information,
 you can contact us



25 rue Georges Morel
 CS 90024
 49 071 BEAUCOUZE cedex
 02 41 22 58 00
 contact@geves.fr



www.geves.fr



GEVES

Expertise & Performance

**Variety and Seed Study
 and control Group**

GEVES is a Public Interest Group associated with :



© GEVES - May 2018 - All rights reserved

GEVES' missions

Evaluation of all new plant varieties

for their registration on the official French catalogue, granted by the ministry in charge of Agriculture upon CTPS proposal (Technical Committee for Plant Breeding), and authorising their marketing



for their legal protection given at a national level by INOV (National Office for plant breeders rights) or at Community level by CPVO (Community Plant Variety Office), according to UPOV international convention (International Union for the Protection of New Varieties of Plants)

Control of quality and varietal conformity of seeds and plants

within the framework of certification by SOC

Training courses

Monitoring of a French network of laboratories for seed analyses

Research and expertise

to improve methods and techniques at national and international levels

Manage national coordination of the preservation of the phyto-genetic resources

Our locations



Glossary

- CTPS Technical Committee for Plant Breeding
- CPVO Plant Breeders Rights Committee
- INOV National Office for plant breeders rights
- OCVV Community Plant Variety Office
- UPOV International Union for the protection of new varieties of plants
- SOC Official Service for Seed and Variety control and certification
- ISTA International Seed Testing Association

Organised into 3 operating divisions

SEV Variety Study Department



- Field and greenhouse tests, for registration and protection, following experimental protocols for each species
- A new variety must be Distinct, Uniform and Stable (DUS). Agricultural crops are additionally checked for Value for Cultivation, Use and Sustainability (VCUS)
- Activities of **SEV** are conducted on 12 locations and on field crops, vegetables, ornamentals, fruit trees and vine. Numerous trials for VCUS are run by breeders and other structures under GEVES supervision and control.

SNES National Seed Testing Station



SNES, french official reference laboratory, manage:

- Analyses and controls of seed quality (certification, import-export, on-demand expertise)
- Sanitary quality analyses on seeds and resistance tests on plant varieties
- Monitoring and technical support for seed companies (110 laboratories)
- Training and technical qualification for laboratory engineers and technicians



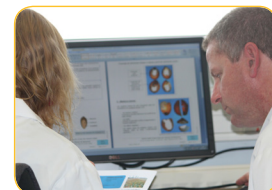
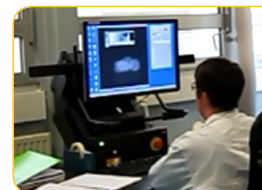
BioGEVES - Laboratoire de biologie moléculaire et de biochimie



BioGEVES develops new methods and conducts analyses mainly In support of **SEV** and **SNES** by:

- Genotyping by protein electrophoresis and molecular markers
- Detection of specific DNA sequences (GMOs, pathogens)
- Biochemical analyses

BioGEVES also performs on-demand



GEVES in figures

- 2500 candidate varieties studied per year
- 50 000 lots seed lots analysed per year
- 420 ha on 12 locations
- 250 permanent employees including 145 from INRA



ACCREDITATION
N°1-1316 et N°1-6176
LISTES DES SITES ET
PORTÉES DISPONIBLES
SUR WWW.COFRAC.FR



ISTA ACCREDITED
LABORATORY FRDL0200



N° 2018/78826.1

GEVES and quality

Contact

02 41 22 58 00
contact@geves.fr
www.geves.fr

